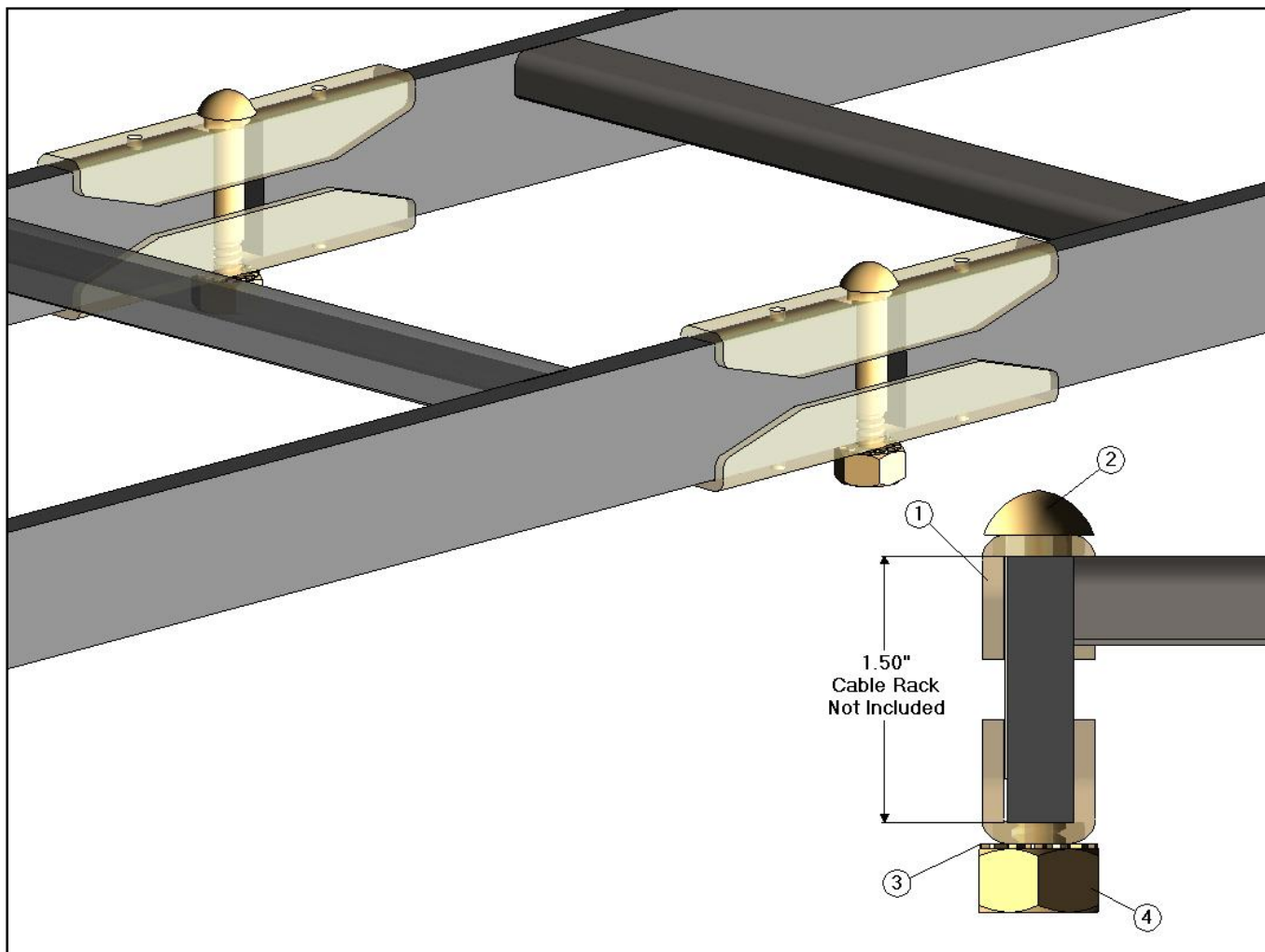




SC12 - Straight Clamp Kit - 1.50" Cable Rack - Pair



SC12 - Straight Clamp Kit  
1.50" Cable Rack - Pair

Item	CSF P/N#	QTY	Description
1	SC	4	Straight Clamp Bracket
2	CB172	2	3/8-16 Carriage Bolt
3	LWE156	2	3/8" External Tooth Lock Washer
4	HN146	2	3/8-16 Hex Nut

Notes :

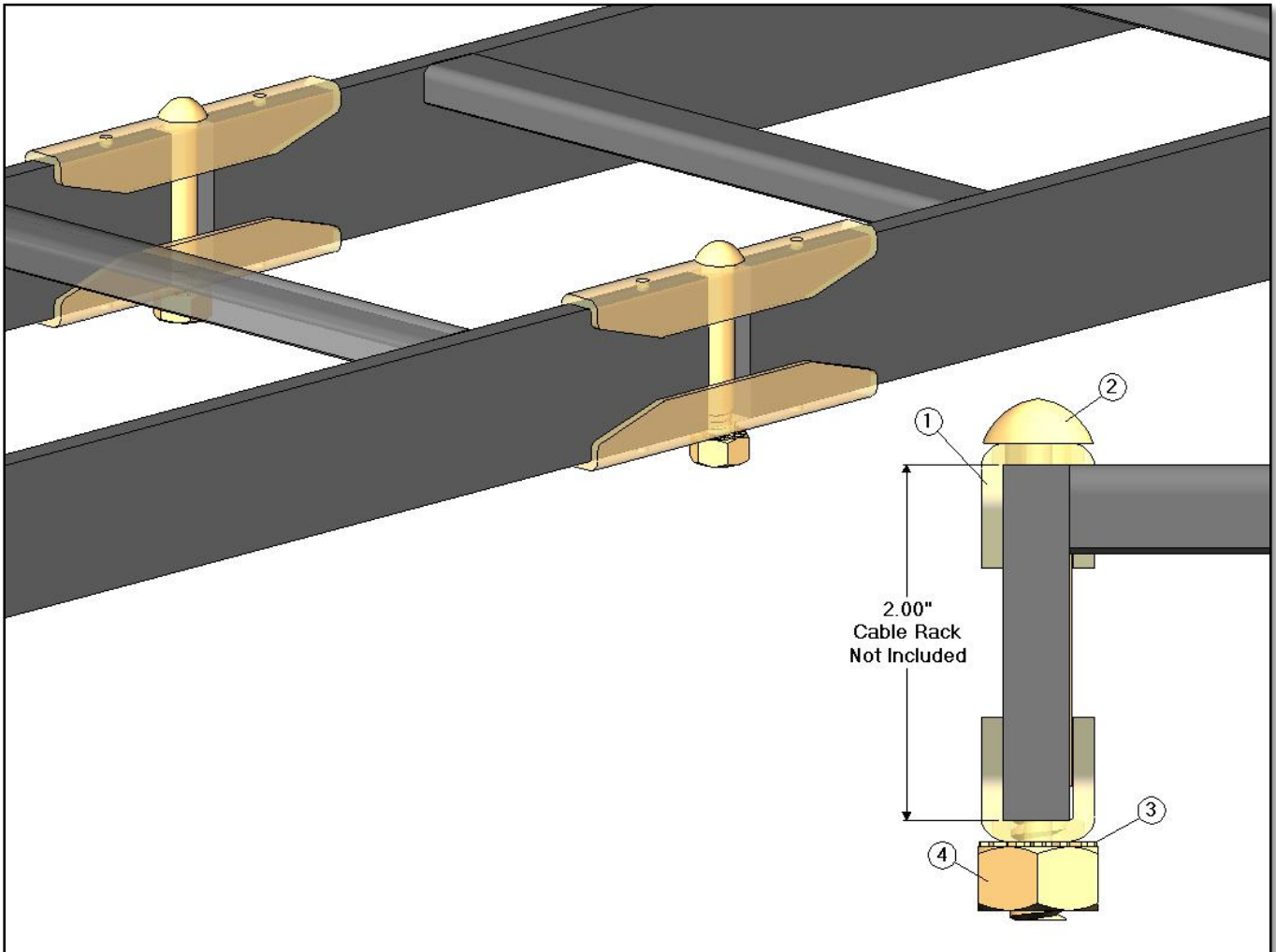
- Straight Clamps fit Tube/ Bar and Channel Stringer
- Cable Rack - Not Included.
- SC12 Kit can also be use to Splice 1.50" Aux. Framing Bar.
- Hardware finish is zinc yellow.

Specifications subject to change. Please contact CSF Customer Service for more information.



# SC22 Straight Clamp Kit for 2.00" Cable Rack - Pair

## SC22 - Straight Clamp Kit for 2.00" Cable Rack - Pair



### SC22 - Straight Clamp Kit for 2.00" Cable Rack - Pair

Item	CSF P/N#	QTY	Description
1	SC	4	Straight Clamp Bracket
2	CB173	2	3/8-16 Carriage Bolt
3	LWE156	2	3/8" External Tooth Lock Washer
4	HN146	2	3/8-16 Hex Nut

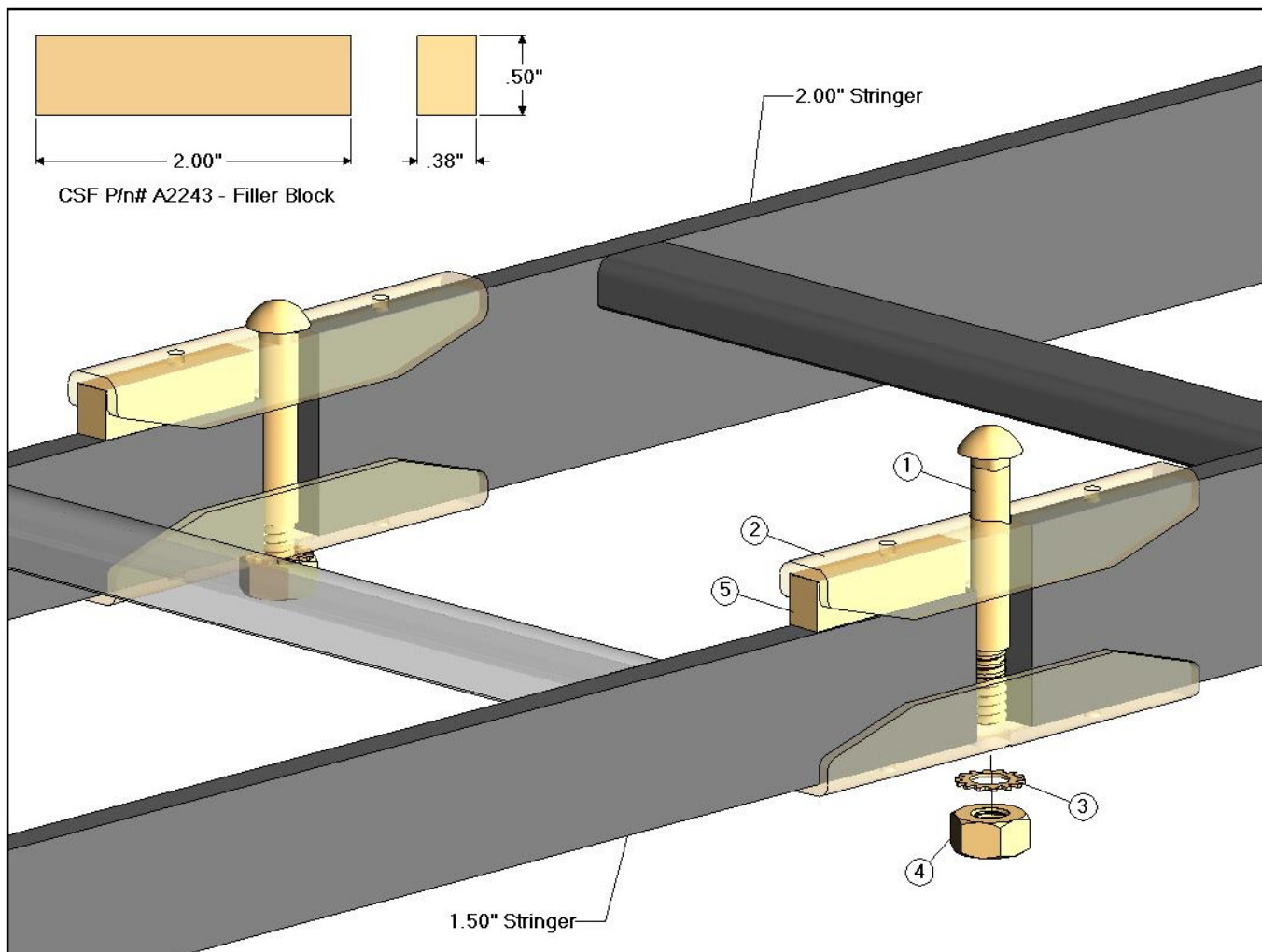
**Notes :**

- Straight Clamps fit Tube/ Bar and Channel Stringer
- Cable Rack - Not Included
- Hardware finish is zinc yellow.

Specifications subject to change. Please contact CSF Customer Service for more information.



SC22DW - Straight Clamp Kit for 2.00" Cable Rack to 1.50" Cable Rack - Pair



SC22DW - Straight Clamp Kit for 2.00" Cable Rack to 1.50" Cable Rack - Pair			
Item	CSF P/N#	QTY	Description
1	CB173	2	3/8-16 Carriage Bolt
2	SC	4	Straight Clamp Bracket
3	LWE156	2	3/8" External Tooth Lock Washer
4	HN146	2	3/8-16 Hex Nut
5	A2243	2	Filler Block

Notes :

- Straight Clamps fit Tube/ Bar and Channel Stringer
- Cable Rack - Not Included
- Hardware finish is zinc yellow.

Specifications subject to change. Please contact CSF Customer Service for more information.